



JEAN ROUSSEAU
Paris

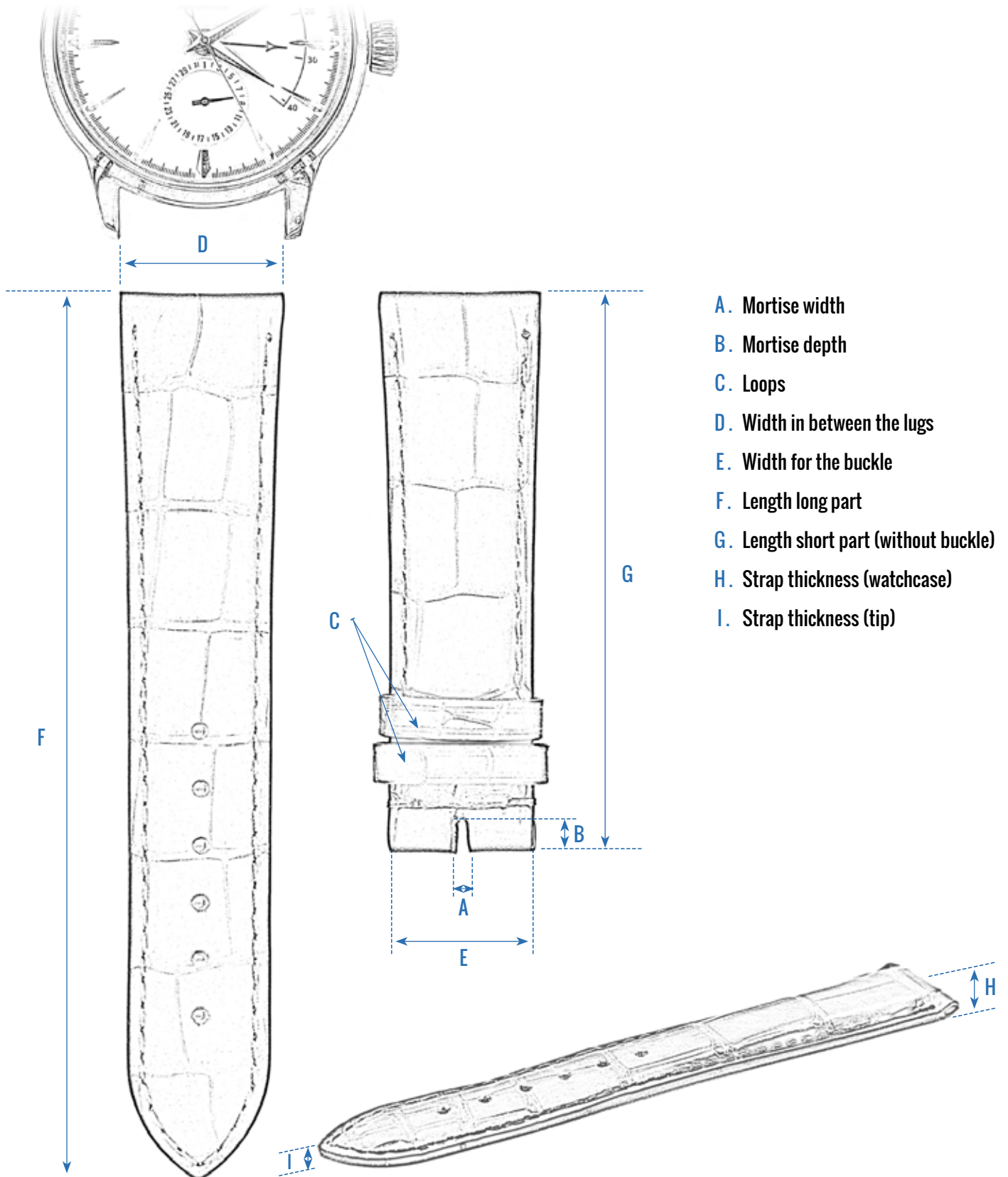
HOW TO MEASURE YOUR WATCH STRAP
PRENDRE LES MESURES DE SON BRACELET

時計ベルトの測り方
如何測量您的表帶



JEAN ROUSSEAU
Paris

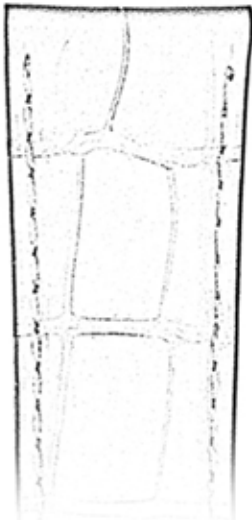
HOW TO MEASURE YOUR WATCH STRAP



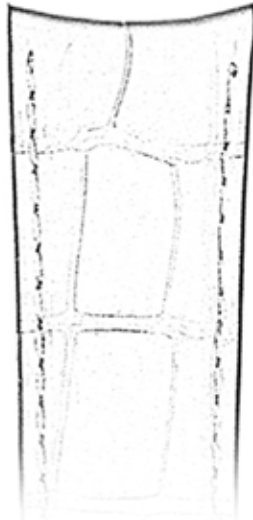
HOW TO MEASURE YOUR WATCH STRAP

LUGS

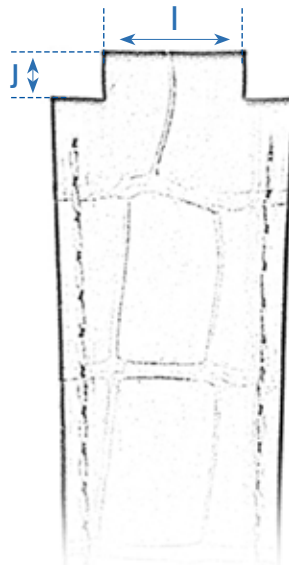
Straight



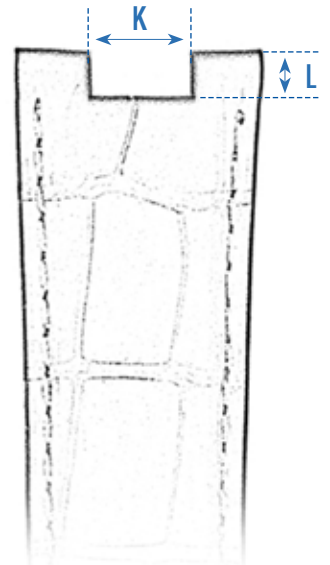
Curved



with Indent



Notched



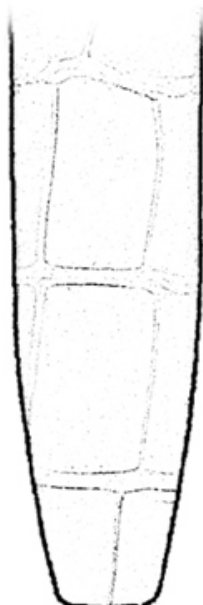
- I. Indent's width
- J. Indent's height

- K. Notch's width
- L. Notch's height

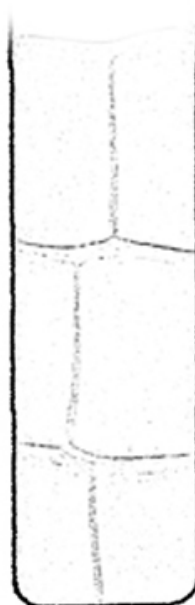
TIP



Ogive



JR



Square

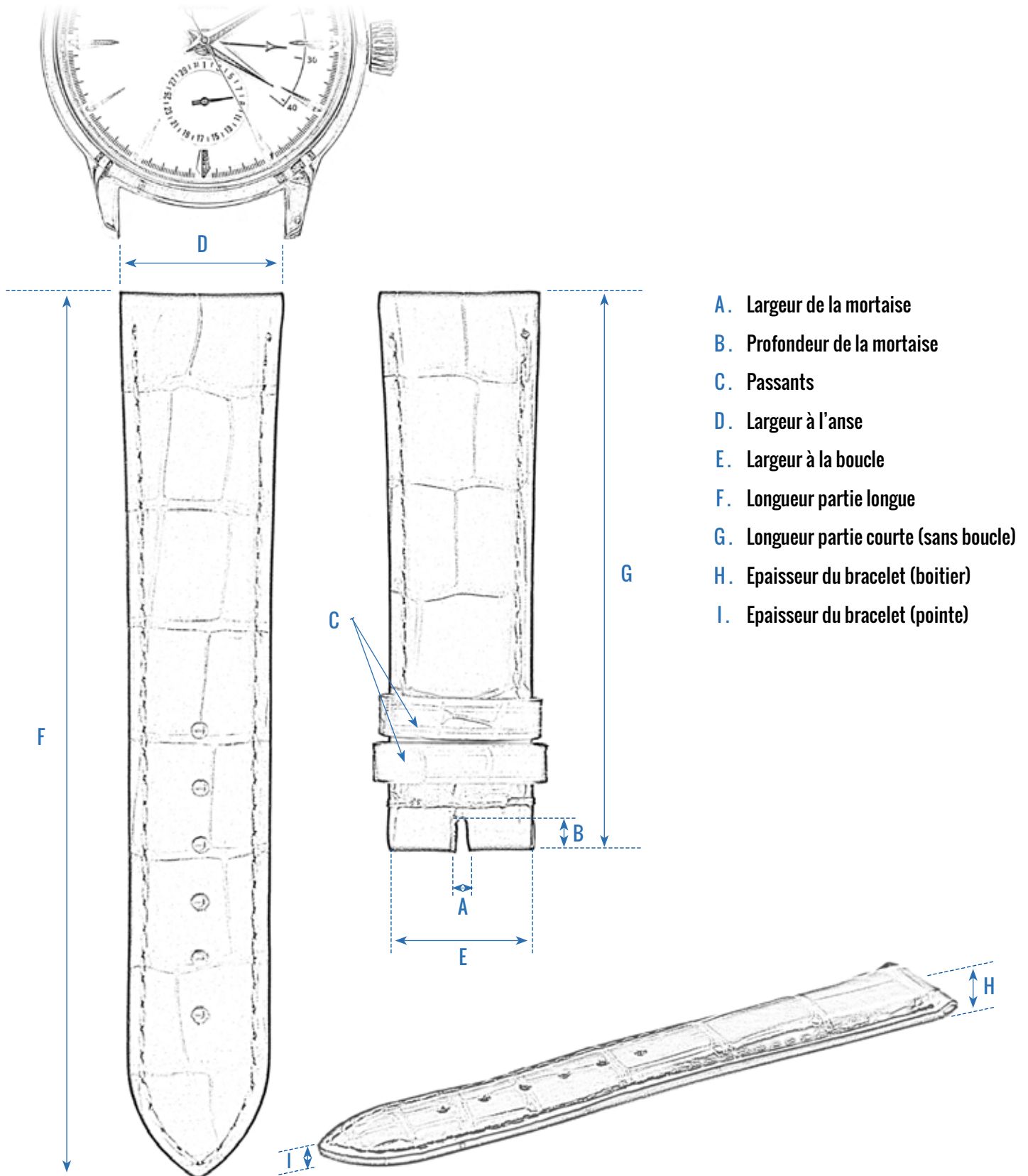


Round



JEAN ROUSSEAU
Paris

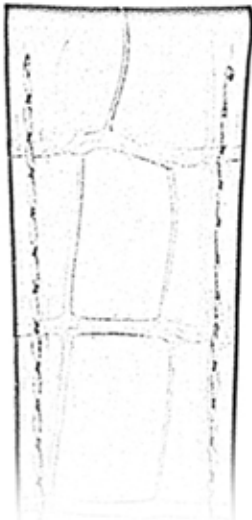
PRENDRE LES MESURES DE SON BRACELET



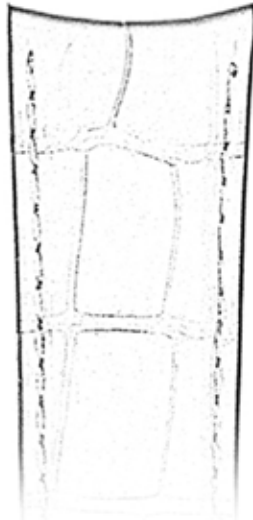
PRENDRE LES MESURES DE SON BRACELET

ANSES

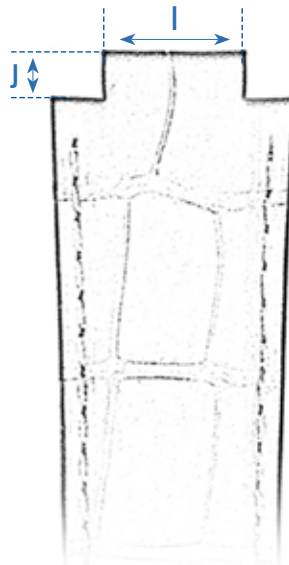
Droites



Courbées

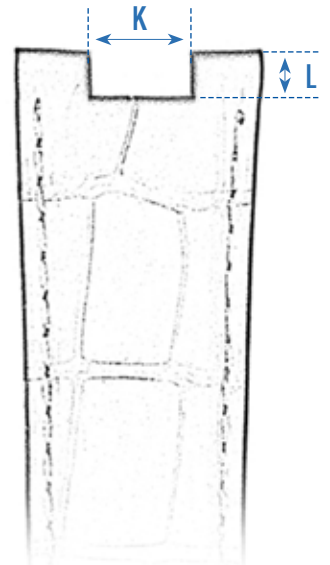


Avec décroché



- I. Largeur du décroché
- J. Hauteur du décroché

Avec encoches

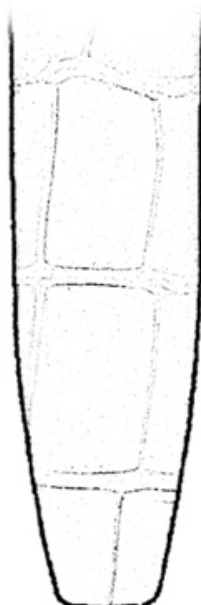


- K. Largeur de l'encoche
- L. Hauteur de l'encoche

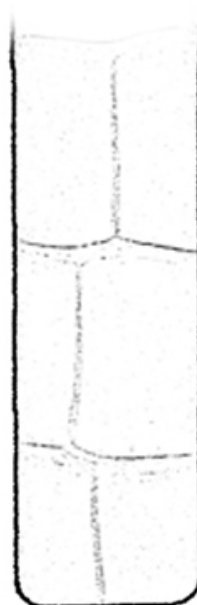
POINTE



Ogive



JR



Carrée

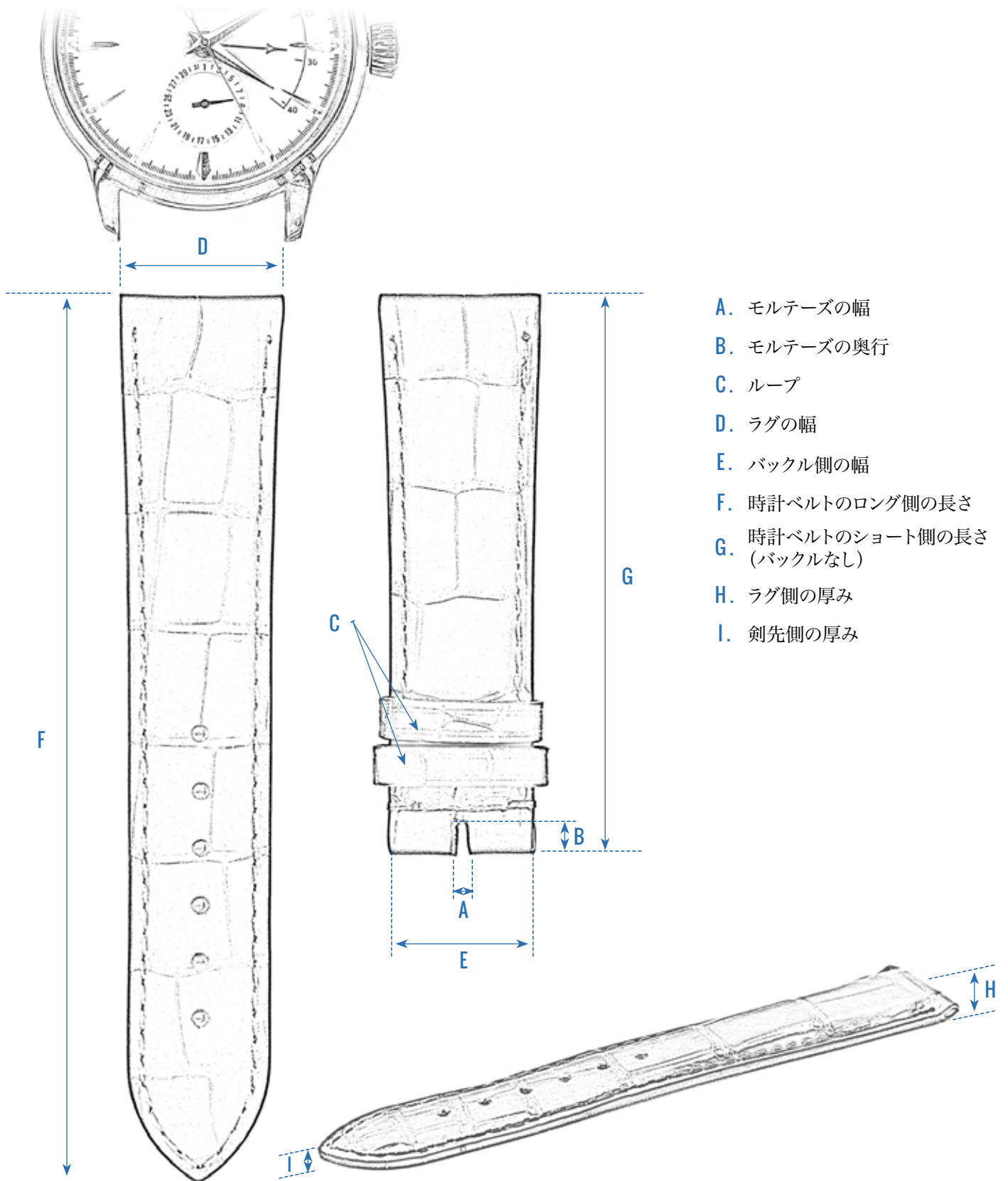


Ronde



JEAN ROUSSEAU
Paris

時計ベルトの測り方



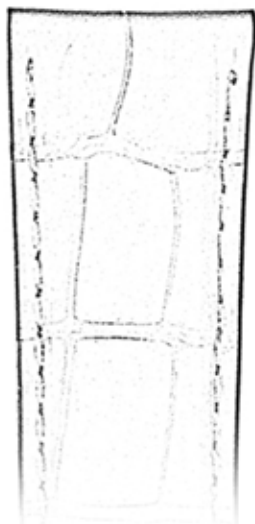


JEAN ROUSSEAU
Paris

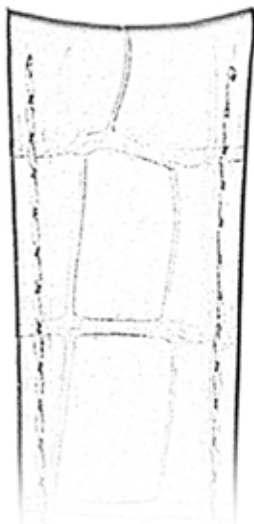
時計ベルトの測り方

ラグ

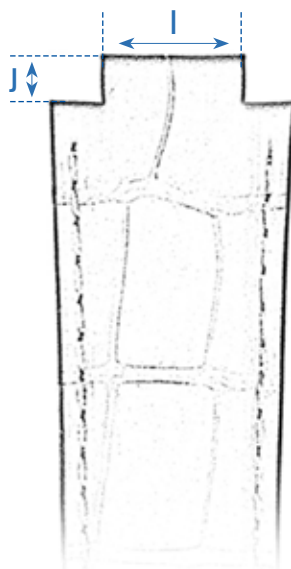
フラット



カーブ



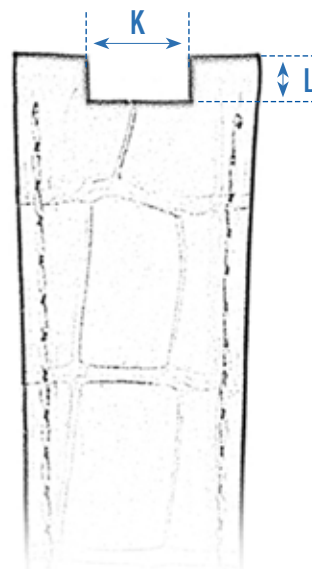
凸型



I. 中心幅

J. 縦

凹型



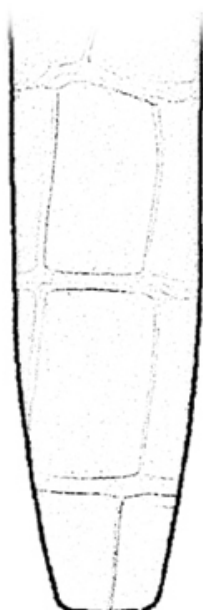
K. 中心幅

L. 縦

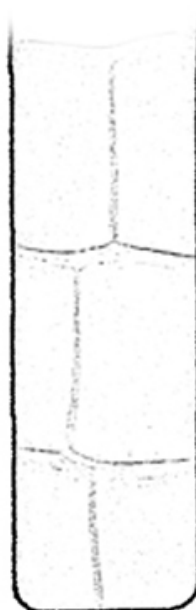
剣先タイプ



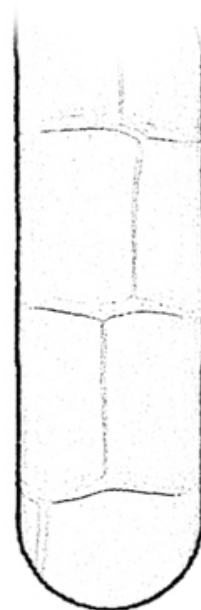
ボート



オメガ型



スクエア

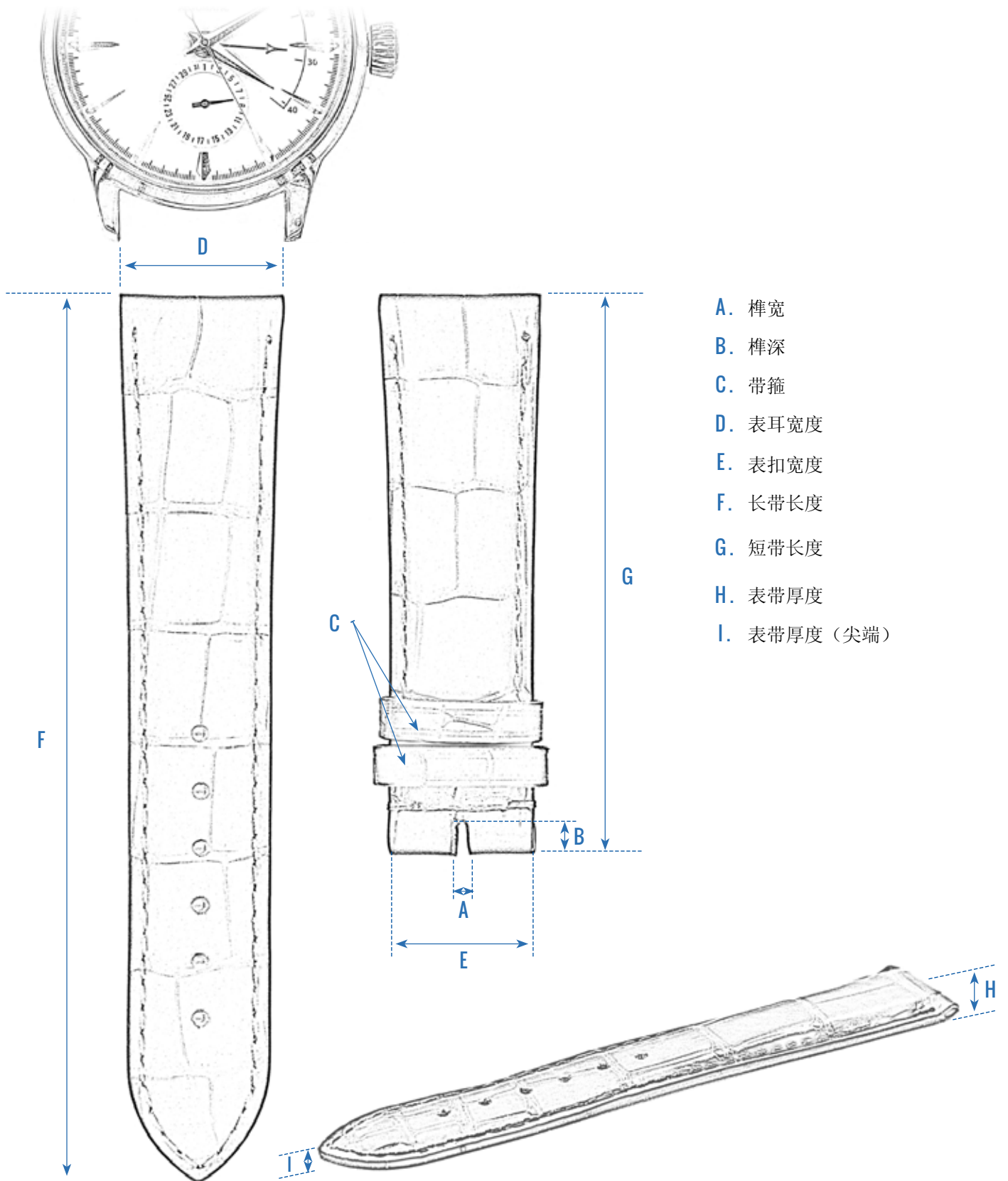


ラウンド



JEAN ROUSSEAU
Paris

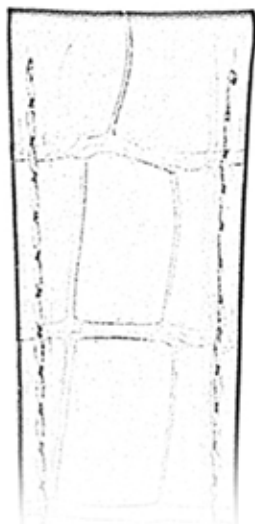
如何测量您的表带



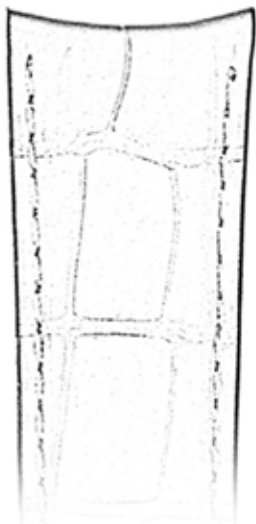
如何测量您的表带

表耳

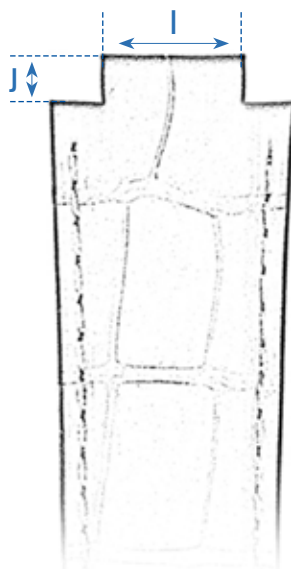
直型



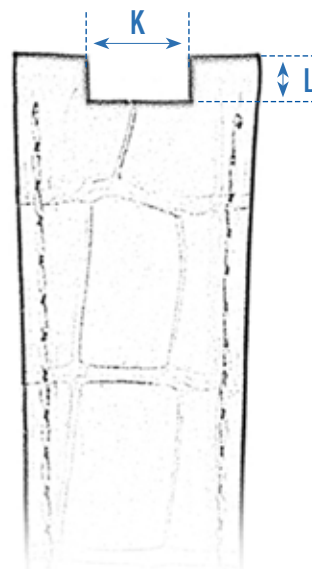
弯型



凸型



凹型



I. 凸出宽度

J. 凸出高度

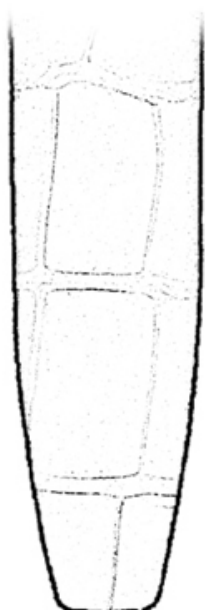
K. 凹进宽度

L. 凹进高度

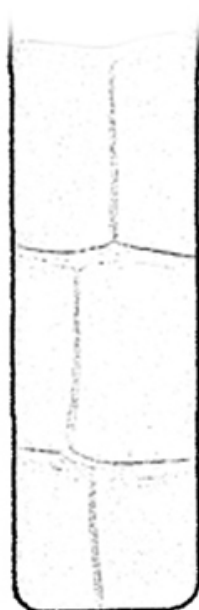
尖端



尖型



JR型



方型



圆型